



Tournament Manager

Quickstart



Setting up a tournament

Lets get started by setting up an example tournament...

1. Open the top door.
2. Press the "TEST" switch to enter the operator Test menu.
3. Press the "Enable Smart Settings" button and answer "yes" when asked if you are sure.



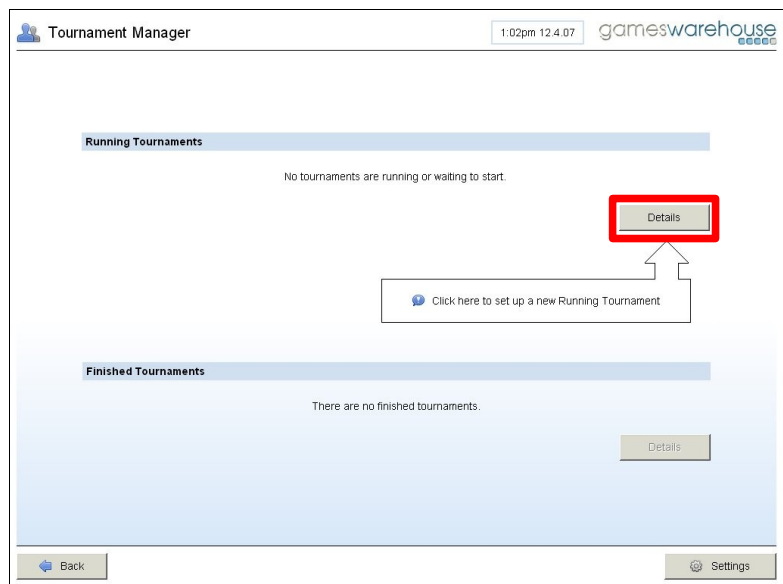
You will now be on the Games screen.

4. Press the "Tournaments" button in the bottom-right of the screen.



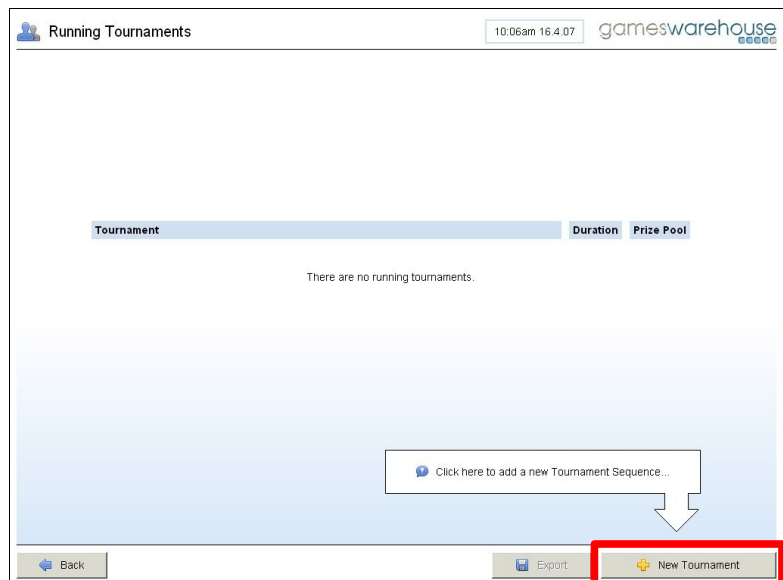
5. You have now entered the Tournament Manager, which will look like this.

Press the "Details" button.

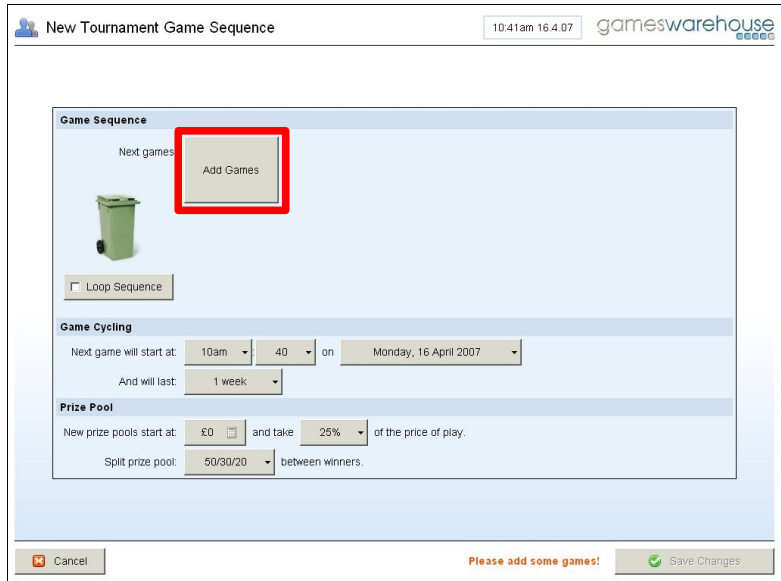


6. You have now entered the Running Tournaments screen.

Press the "New Tournament" button.



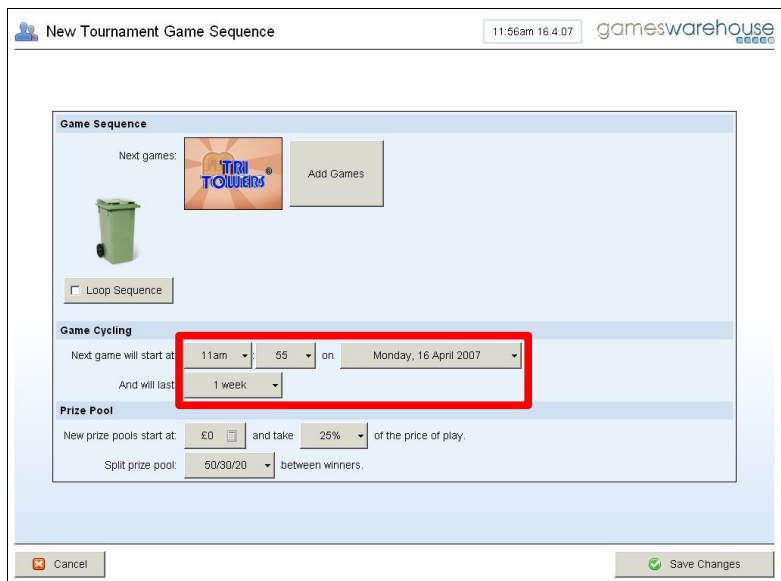
- This is the New Tournament Game Sequence screen.
Press "Add Games" to add games to the tournament.



- On the Add Games screen, select a game (we are using Tri-Towers in our example) and then Press "Add Games".

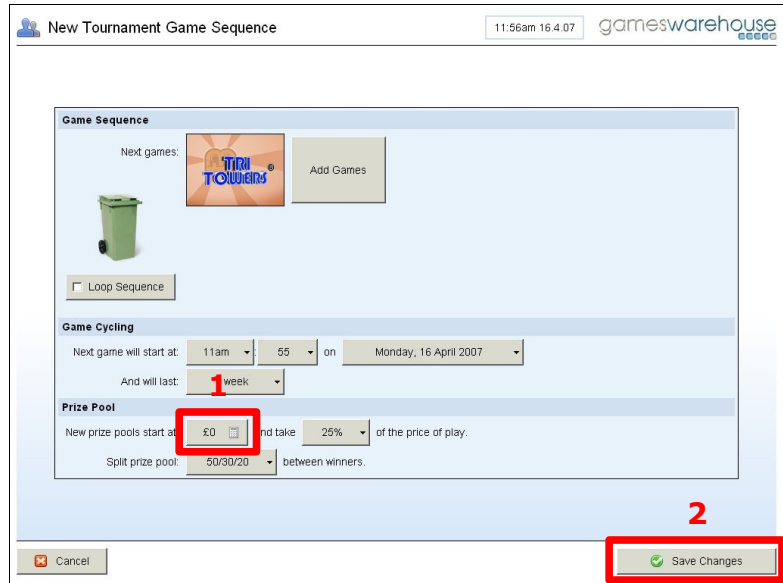


- Choose the time and date that the game should start, and how long the tournament should last.

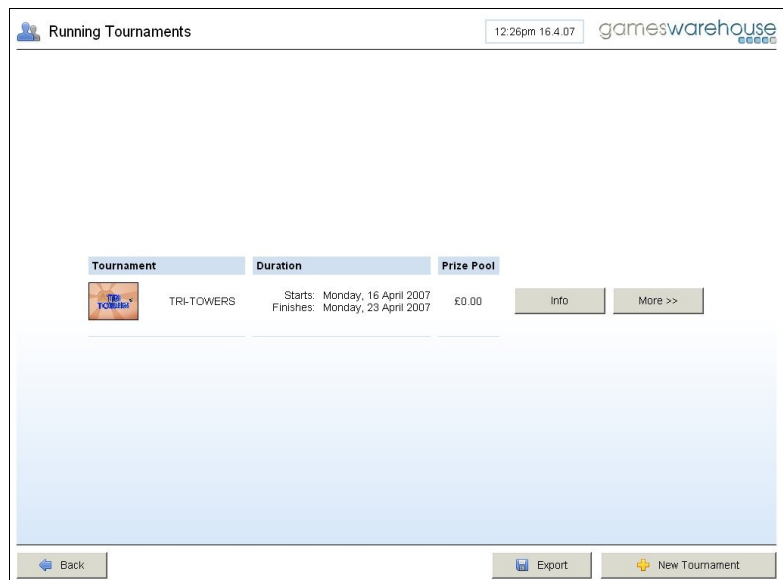


10. If you want to start with cash in the prize pool, enter it now.

Press "Save Changes".



11. Your tournament is now running and is ready to play immediately.



12. Close the cabinet top door (and bottom door if necessary) to return to the games menu.